

Name of the Land Owning Companies

1. Aadharseela Dealers Private Limited.
2. Aadharseela Tie Up Private Limited.
3. Anjanidham Marketing Private Limited.
4. Anjanidham Mercantile Private Limited.
5. Aravati Complex Private Limited.
6. Asthujia Complex Private Limited.
7. Asthujia Housing Private Limited.
8. Average Enclave Private Limited.
9. Average Heights Private Limited.
10. Average Properties Private Limited.
11. Average Residency Private Limited.
12. Baglamukhi Vyapaar Private Limited.
13. Bangbhum Shoppers Private Limited.
14. Blockdeal Hirise Private Limited.
15. Blockdeal Infracon Private Limited.
16. Blockdeal Nirman Private Limited.
17. Blockdeal Residency Private Limited.
18. Boostlej Residency Private Limited.
19. Circular Promoters Private Limited.
20. Coolhut Builders Private Limited.
21. Coolhut Complex Private Limited.
22. Coolhut Enclave Private Limited.
23. Coolhut Hirise Private Limited.
24. Coolhut Housing Private Limited.
25. Coolhut Infracon Private Limited.
26. Coolhut Infrastructure Private Limited.
27. Coolhut Nirman Private Limited.
28. Coolhut Projects Private Limited.
29. Coolhut Promoters Private Limited.
30. Coolhut Properties Private Limited.
31. Coolhut Realty Private Limited.
32. Coolhut Residency Private Limited.
33. Crossway Complex Private Limited.
34. Crossway Enclave Private Limited.
35. Crossway Infracon Private Limited.
36. Crossway Realstate Private Limited.
37. Dayasindhu Vinimay Private Limited.
38. Devpujan Complex Private Limited.
39. Devpujan Enclave Private Limited.
40. Devpujan Hirise Private Limited.
41. Devpujan Infracon Private Limited.
42. Devpujan Residency Private Limited.
43. Dhanaasha Commercial Private Limited.
44. Dhanaasheth Tradelink Private Limited.
45. Dhansilk Complex Private Limited.
46. Dhansilk Developers Private Limited.
47. Dhansilk Heights Private Limited.
48. Dhansilk Infracon Private Limited.
49. Dhansilk Nirman Private Limited.
50. Dhansilk Project Private Limited.
51. Dhansubh Dealer Private Limited.
52. Fastener Realstate Private Limited.
53. Fastner Complex Private Limited.
54. Fastner Heights Private Limited.
55. Giridhan Commercial Private Limited.
56. Greatful Realstate Private Limited.
57. Highpower Heights Private Limited.
58. Highpower Infracon Private Limited.
59. Hopeful Enclave Private Limited.
60. Hopeful Heights Private Limited.
61. Hopeful Infracon Private Limited.
62. Hopeful Nirman Private Limited.
63. Hopeful Projects Private Limited.
64. Hopeful Promoters Private Limited.
65. Hopeful Realstate Private Limited.
66. Hopeful Residency Private Limited.
67. Jatashri Residency Private Limited.
68. Kalashsiddhi Exports Private Limited.
69. Lifelong Heights Private Limited.
70. Lifelong Infracon Private Limited.
71. Lifemake Mercantile Private Limited.
72. Linkrose Dealer Private Limited.
73. Linkrose Distributors Private Limited.
74. Mangalidham Complex Private Limited.
75. Mangalidham Constructions Private Limited.
76. Mangalidham Developers Private Limited.
77. Mangalidham Enclave Private Limited.
78. Mangalidham Heights Private Limited.
79. Mangalidham Housing Private Limited.
80. Mangalidham Infracon Private Limited.
81. Mangalidham Nirman Private Limited.
82. Mangalidham Retailers Private Limited.
83. Mangalshih Shoppers Private Limited.
84. Mastery Enclave Private Limited.
85. Mastery Housing Private Limited.
86. Mastery Nirman Private Limited.
87. Mastery Realstate Private Limited.
88. Megapix Residency Private Limited.
89. Moonlike Dealer Private Limited.
90. Moonlike Distributors Private Limited.
91. Moonlike Vyapaar Private Limited.
92. Mrudul Complex Private Limited.
93. Mrudul Enclave Private Limited.
94. Mrudul Heights Private Limited.
95. Palanhar Vyapaar Private Limited.
96. Panchmahal Vinimay Private Limited.
97. Panchmurti Complex Private Limited.
98. Panchmurti Infracon Private Limited.
99. Panchmurti Hirise Private Limited.
100. Panchmurti Promoters Private Limited.
101. Panchmurti Residency Private Limited.
102. Panchmurti Builders Private Limited.
103. Panchmurti Enclave Private Limited.
104. Panchmurti Hirise Private Limited.
105. Panchmurti Residency Private Limited.
106. Panchmurti Realty Private Limited.
107. Power Point Builders Private Limited.
108. Power Point Dealers Private Limited.
109. Power Point Realty Private Limited.
110. Power Point Tie Up Private Limited.
111. Prathampujay Vyapaar Private Limited.
112. Primary Enclave Private Limited.
113. Primary Heights Private Limited.
114. Pushapham Marketing Private Limited.
115. Rangarang Traders Private Limited.
116. Ratansidhi Commerce Private Limited.
117. Roselife Mercantile Private Limited.
118. Roserise Vanija Private Limited.
119. Rudramukhi Complex Private Limited.
120. Rudramukhi Constructions Private Limited.
121. Rudramukhi Hirise Private Limited.
122. Rudramukhi Promoters Private Limited.
123. Rudramukhi Residency Private Limited.
124. Shivbhakti Constructions Private Limited.
125. Shivmahima Vyapaar Private Limited.
126. Shivpawan Complex Private Limited.
127. Shivpawan Developers Private Limited.
128. Shivpawan Heights Private Limited.
129. Shivpawan Housing Private Limited.
130. Shivpawan Infracon Private Limited.
131. Shivpawan Nirman Private Limited.
132. Shivpawan Properties Private Limited.
133. Shivpawan Realstate Private Limited.
134. Shivpawan Tradelink Private Limited.
135. Shivpawan Constructions Private Limited.
136. Shivpawan Vyapaar Private Limited.
137. Shivratni Enclave Private Limited.
138. Shivratni Nirman Private Limited.
139. Shivratni Projects Private Limited.
140. Shivratni Promoters Private Limited.
141. Shivratni Realty Private Limited.
142. Shivratni Residency Private Limited.
143. Sidhimaya Vyapaar Private Limited.
144. Snowwise Tradelink Private Limited.
145. Sun View Infracon Private Limited.
146. Teenlok Commercial Private Limited.
147. Teenlok Tradelink Private Limited.
148. Transways Complex Private Limited.
149. Transways Heights Private Limited.
150. Transways Infracon Private Limited.
151. Transways Projects Private Limited.
152. Tropex Vanija Private Limited.
153. Vostro Complex Private Limited.
154. Wonder Vyapaar Private Limited.
155. Devpujan Realstate Private Limited.
156. Hopeful Complex Private Limited.
157. Hopeful Housing Private Limited.
158. Megapix Complex Private Limited.
159. Shivpawan Enclave Private Limited.

CERTIFICATE OF STRUCTURAL STABILITY

WE HEREBY CERTIFY THAT THE FOUNDATION AND SUPERSTRUCTURE OF THE BUILDING PROPOSED FOR CONSTRUCTION ON MOUZA- PATULIA, DAG NOS. - 696 (P), 697, 698, 699, 700, 737 (P), 743, 744 (P), 749, 750, 754, 755, 756, 757, 758, 759, 760, 761, 762, 766 (P), 768, 769, 770, 771, 772, 773, 774, 776, 777, 844 (P), 845 (P), 846, 847 (P), 849, 850, 851, 853, 854, 855, 856, 857, 858, 859, 867, 868, 869, 870, 871, 872, 873, 874, 875, 876, 877, 878, 879, 880, 881, 882, 883, 884, 885, 886, 887, 888, 889, 890, 891, 892, 893, 894, 895, 896, 897, 898, 899, 900, 901, 902, 903, 904, 905, 906, 907, 908, 909, 910, 911, 912, 913, 914, 915, 916, 917, 918, 919, 920, 921, 922, 923, 924, 925, 926, 927, 928, 929, 930, 931, 932, 933, 934, 935, 936, 937, 938, 939, 940, 941, 942, 943, 944, 945, 946, 947, 948, 949, 950, 951, 952, 953, 954, 955, 956, 957, 958, 959, 960, 961, 962, 963, 964, 965, 966, 967, 968, 969, 970, 971, 972, 973, 974, 975, 976, 977, 978, 979, 980, 981, 982, 983, 984, 985, 986, 987, 988, 989, 990, 991, 992, 993, 994, 995, 996, 997, 998, 999, 1000, CORRESPONDING L.R. DAG NOS. - 1595 (P), 1596, 1597, 1598, 1599, 1601 (P), 1702, 1635 (P), 1704, 1703, 1705, 1706, 1707, 1708, 1715, 1709, 1588, 1589, 1591, 1584, 1585 (P), 1587, 1586, 1712, 1710, 1713, 1717, 1718, 1825, 1824, 1736 (P), 1734 (P), 1733, 1732 (P), 1718, 1719, 1724, 1722, 1723, 1557, 1735, 1555, 1554, 1583, 1720, 1711, 1714, 1726 & 1556 RESPECTIVELY, J.L.NO. - 4, UNDER PATULIA GRAM PANCHAYET, P. S. KHARDAH, DISTRICT - NORTH 24-PARGANAS. HAVE BEEN SO DESIGNED BY US WILL MAKE SUCH FOUNDATION AND SUPERSTRUCTURE SAFE IN ALL RESPECTS INCLUDING THE CONSIDERATION OF BEARING CAPACITY & SETTLEMENT OF SOIL ETC.

The structural analysis reports & soil reports are kept for reference in this office. The clearance is accorded subject to certificate of architect & Engineer, Geo Tech Engineer.

Signature
Executive Engineer (PIU-Head) WSSRDA North 24 Parganas District Unit

Signature
May be sanctioned by Junior Engineer (By) Barasemari Dev. Block North 24 Parganas

SANCTIONED
As per sec. 72 of West Bengal Panchayat Samity Administrative Rule 2008
Order No. 254/18 dt. 06.7.2020
of Barrackpore-II Panchayat Samity

Signature
Executive officer
Barrackpore-II Panchayat Samity

JAY PRAKASH BHARAT KUMAR AGRAWAL
B. Arch., A.I.I.A.
Reg. No. CA / 86 / 10098
ARCHITECT SL. NO. - 32(A)

SIGNATURE OF ARCHITECT

Signature
SANJAY KUMAR DUBEY
B.E. (Structure), Chartered Engineer (I)
Structural Engineer, ESE-1/142
Kolkata Municipal Corporation

SIG. OF STRUCTURAL ENGG.

Signature
SHYAMAL KUMAR MITRA, B.E. (Civil)
Geo-Technical Engineer
ENROLLMENT NO. 01ER-HIDCO/09/09018

SIG. OF GEO-TECH ENGG.

THE PLAN HAVE BEEN PLANNED & DESIGNED IN COMPLIANCE OF THE 'THE WEST BENGAL MUNICIPAL BUILDING RULES 2007' FOLLOWED BY KHARDAH MUNICIPALITY THE NEAREST MUNICIPALITY. ALL NORMS REGARDING BUILDING SAFETY INCLUDING STRUCTURAL STABILITY & FIRE SAFETY SHALL BE AS PER NBC.

JAY PRAKASH BHARAT KUMAR AGRAWAL
B. Arch., A.I.I.A.
Reg. No. CA / 86 / 10098
ARCHITECT SL. NO. - 32(A)

SIGN. OF ARCHITECT

Signature
SANJAY KUMAR DUBEY
B.E. (Structure), Chartered Engineer (I)
Structural Engineer, ESE-1/142
Kolkata Municipal Corporation

SIGN. OF STRUCTURAL ENGG.

CERTIFICATE OF LAND
I HAVE PERSONALLY VERIFIED THE SITE & FOUND IT IS BUILDABLE & TO MY KNOWLEDGE IT IS NOT A TANK OR FILLED UP TANK.

JAY PRAKASH BHARAT KUMAR AGRAWAL
B. Arch., A.I.I.A.
Reg. No. CA / 86 / 10098
ARCHITECT SL. NO. - 32(A)

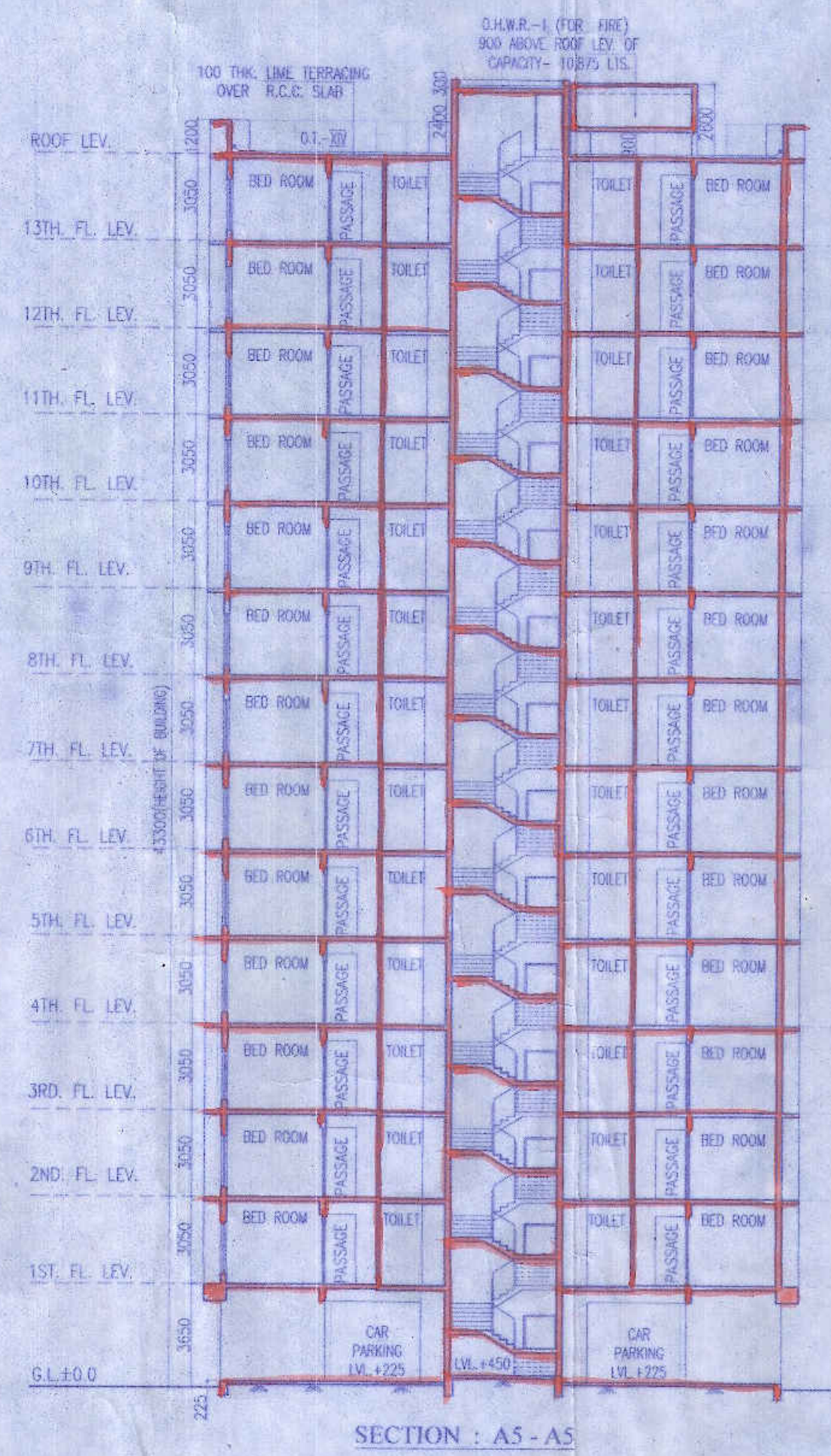
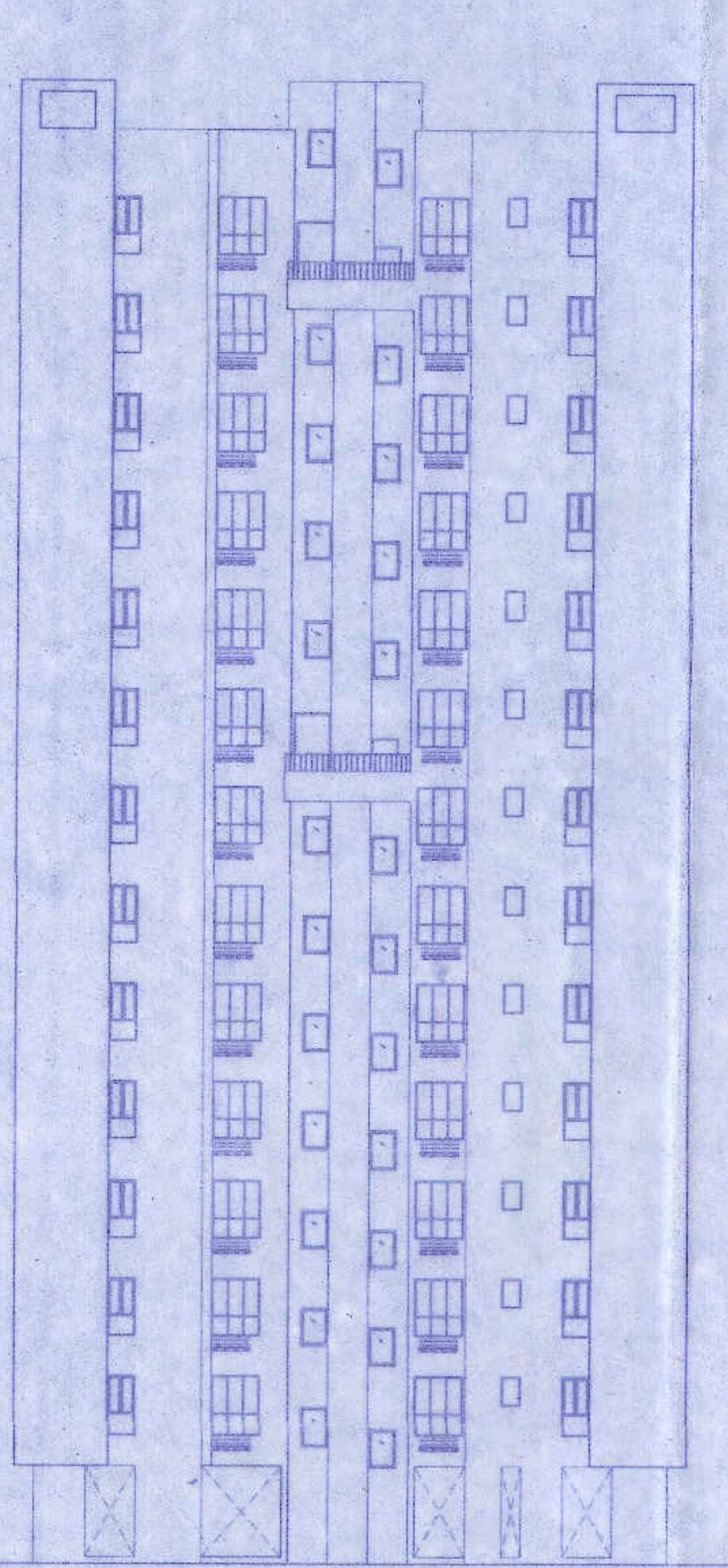
SIG. OF ARCHITECT

TITLE :-
FRONT ELEVATION, SECTION A5-A5 & SECTION A6-A6
(BLOCK - 3B)

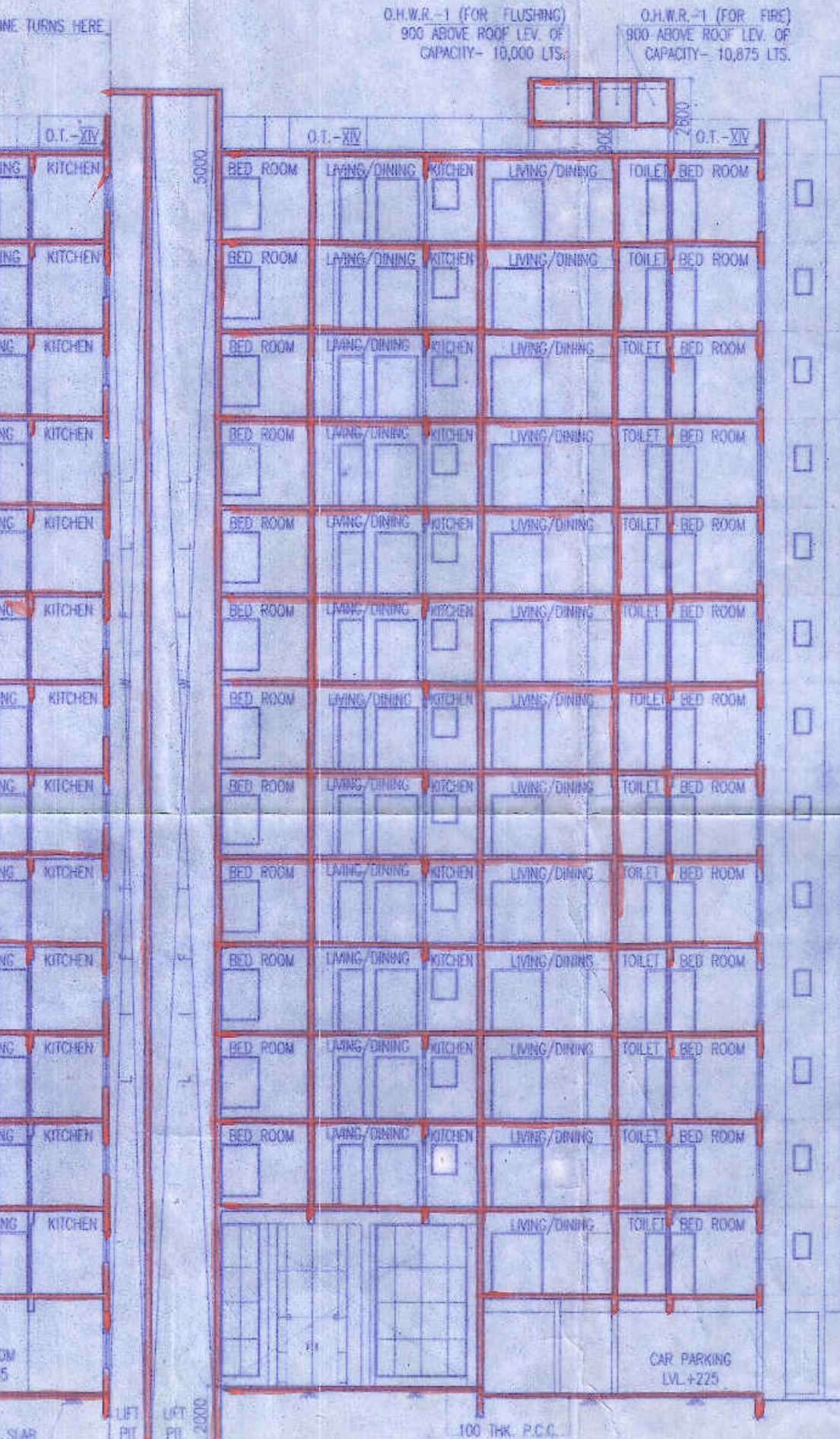
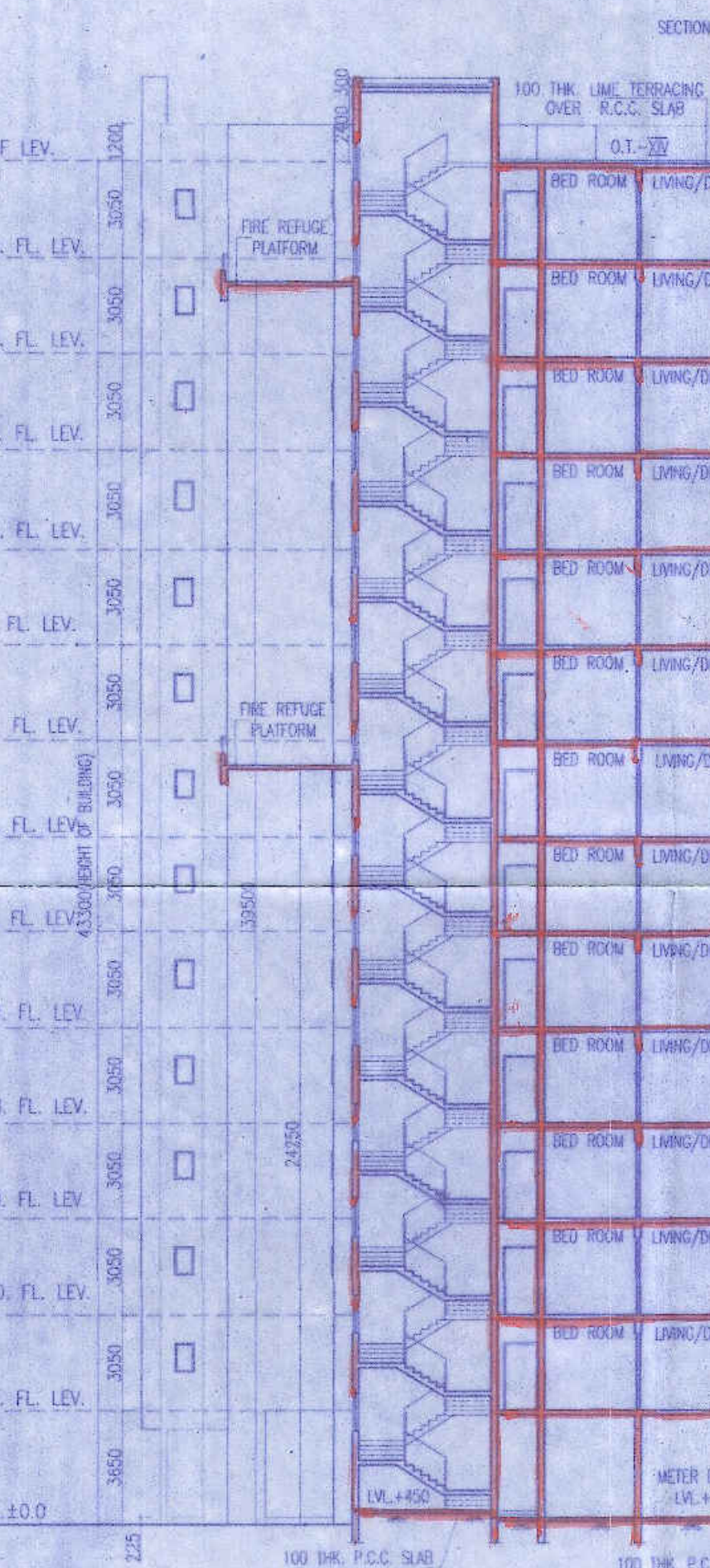
PROJECT :-
PROPOSED ADDITION OF 4 NOS. RESIDENTIAL BLOCKS [2NOS. (G-XII) STORIED NAMEDLY - 5 & 6 AND 2 NOS. (G-XIII) STORIED NAMEDLY - 3B & 3C] AND 1 NO. (G-II) STORIED COMMERCIAL BLOCK WITH REVISED OF 7 NOS. BLOCKS [6 NOS. (G-XIII) STORIED NAMEDLY - 1E, 1F, 1G, 1H, 4A, 4B, 4C AND 1 NO. (B-G-VII) STORIED NAMEDLY - 3A] AND 8 NOS. SANCTIONED BLOCKS [7 NOS. (G-XIV) STORIED NAMEDLY - 1A, 1B, 1C, 1D, 2A, 2B, 2D AND 1 NO. (G-II) STORIED NAMEDLY - 2C] UNDER CONSTRUCTION WITH REFERENCE TO THE APPROVAL FOR CONSTRUCTION VIDE PERMISSION NO. - 322/BK-1/PS DATED 11/04/16 AND OUT OF 8 NOS. SANCTIONED BLOCKS 4 NOS. BLOCKS (NAMEDLY - 1B, 1C, 1D & 2A) HAS BEEN OBTAINED OCCUPANCY CERTIFICATE ON 05.04.2019 FROM BKP-II PANCHAYAT SAMITI, NORTH 24 PARGANAS IN RESIDENTIAL COMPLEX AT MOUZA - PATULIA, R.S. DAG NOS. - 696 (P), 697, 698, 699, 700, 737 (P), 743, 744 (P), 749, 750, 754, 755, 756, 757, 758, 759, 760, 761, 762, 766 (P), 768, 769, 770, 771, 772, 773, 774, 776, 777, 844 (P), 845 (P), 846, 847 (P), 849, 850, 851, 853, 854, 855, 856, 857, 858, 867, 868, 869, 870, 871, 872, 873, 874, 875, 876, 877, 878, 879, 880, 881, 882, 883, 884, 885, 886, 887, 888, 889, 890, 901, 902, 903, 904, 905, 906, 907, 908, 909, 910, 911, 912, 913, 914, 915, 916, 917, 918, 919, 920, 921, 922, 923, 924, 925, 926, 927, 928, 929, 930, 931, 932, 933, 934, 935, 936, 937, 938, 939, 940, 941, 942, 943, 944, 945, 946, 947, 948, 949, 950, 951, 952, 953, 954, 955, 956, 957, 958, 959, 960, 961, 962, 963, 964, 965, 966, 967, 968, 969, 970, 971, 972, 973, 974, 975, 976, 977, 978, 979, 980, 981, 982, 983, 984, 985, 986, 987, 988, 989, 990, 991, 992, 993, 994, 995, 996, 997, 998, 999, 1000, CORRESPONDING L.R. DAG NOS. - 1595 (P), 1596, 1597, 1598, 1599, 1601 (P), 1702, 1635 (P), 1704, 1703, 1705, 1706, 1707, 1708, 1715, 1709, 1588, 1589, 1591, 1594, 1585 (P), 1587, 1586, 1712, 1710, 1713, 1717, 1716, 1825, 1824, 1736 (P), 1734 (P), 1733, 1732 (P), 1718, 1719, 1724, 1722, 1723, 1557, 1735, 1555, 1554, 1583, 1720, 1711, 1714, 1726 & 1556 RESPECTIVELY, J.L. NO. - 4, UNDER PATULIA GRAM PANCHAYET, P.S. - KHARDAH, DIST. - NORTH 24-PARGANAS.

ARCHITECTS
AGRAWAL & AGRAWAL
BARODA & KOLKATA

SCALE	DATE	DEALT	CHECKED
1:200	15.07.19	SUTAPA	



SECTION : A5 - A5



SECTION : A6 - A6

Signature
Authorized Signatory

SIGN. OF OWNER